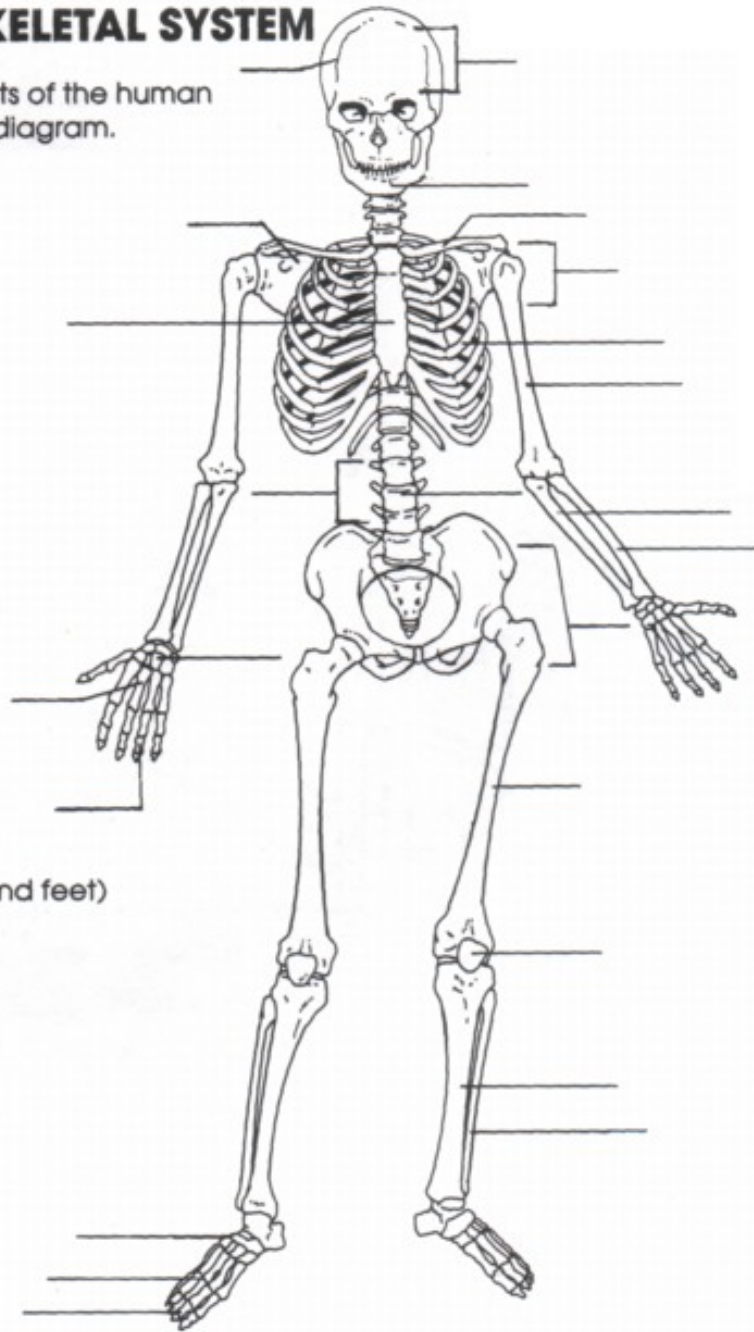


The Human Skeleton

THE HUMAN SKELETAL SYSTEM

Label the following parts of the human skeletal system on the diagram.

- a. skull
- b. cranium
- c. mandible
- d. clavicle
- e. pectoral girdle
- f. scapula
- g. sternum
- h. ribs
- i. humerus
- j. vertebrae
- k. vertebral column
- l. pelvic girdle
- m. radius
- n. ulna
- o. carpals
- p. metacarpals
- q. phalanges
(on both hands and feet)
- r. femur
- s. patella
- t. tibia
- u. fibula
- v. tarsals
- w. metatarsals



Label each of the four types of movable joints shown below.

